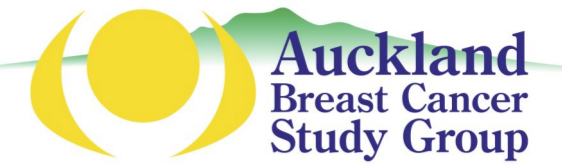


# Auckland Breast Cancer Register—12 Year Data

A special project of the Auckland Breast Cancer Study Group

Vernon Harvey, Reena Ramsaroop, Paul Thompson, Alex Ng, Erica Whineray Kelly, Maria Pearse  
Mark Barrios, Mina Christophers, Troydyn Raturaga



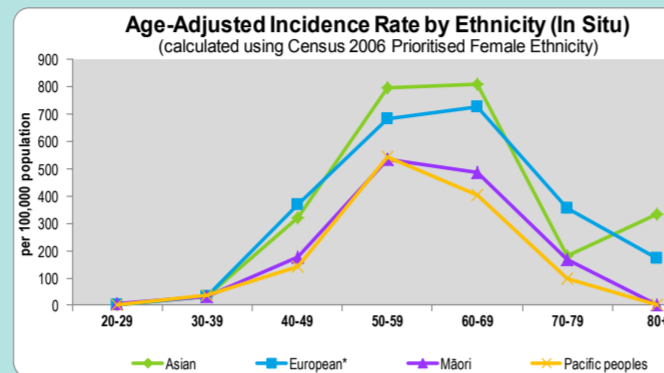
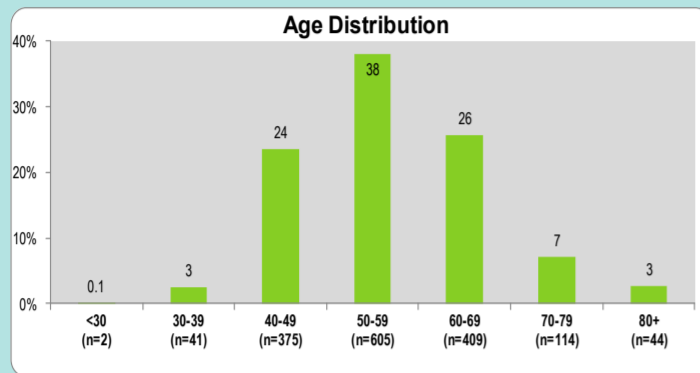
The Register was established against a background of important advances in all areas of breast cancer. Information about current practice plays a key role in supporting the multi-disciplinary teams necessary for modern, high quality, evidenced-based care. Between 1<sup>st</sup> June 2000 and 31<sup>st</sup> May 2012, a total of 10399 patients were diagnosed with breast cancer within the Auckland region. The data for In Situ patients, representing 1643 incidents of breast cancer, is presented below.

\*European includes 'Other Minority Ethnicities' e.g. Middle Eastern, Latin American, African

\*\*Other includes lump, pain, skin change, nipple change, incidental finding and 37 unknown

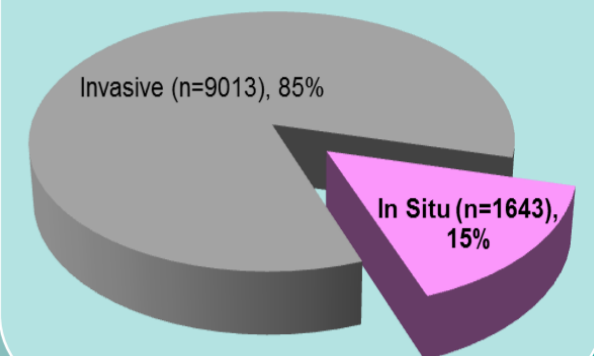
## Breast Cancer — In Situ Disease Data

### Demographics (by patient, n=1590)

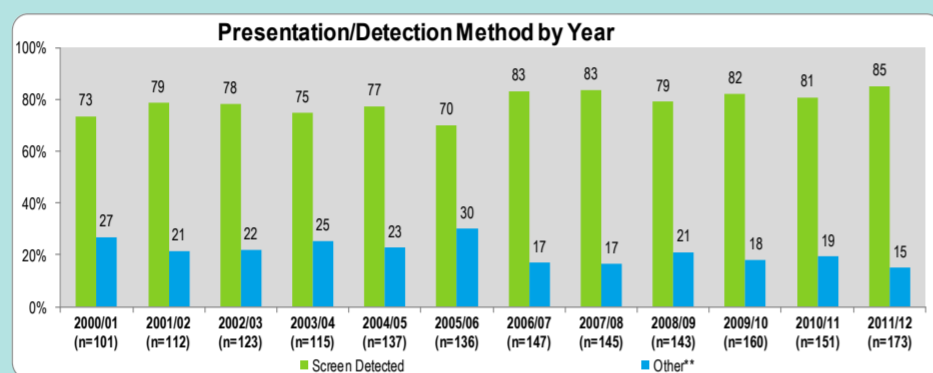


Ethnic Distribution	20-29	30-39	40-49	50-59	60-69	70-79	80+
Asian	0.0	33.9	320.2	794.8	811.2	179.9	333.3
European*	2.1	31.7	369.1	681.6	727.0	356.4	172.7
Māori	7.3	32.2	177.7	534.8	488.6	168.1	0.0
Pacific peoples	0.0	35.6	140.1	544.4	405.7	96.2	0.0

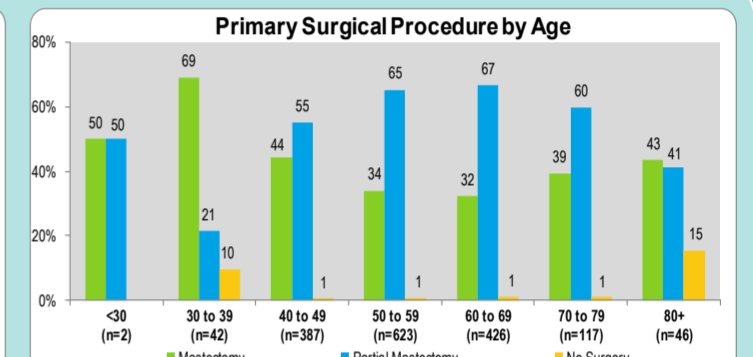
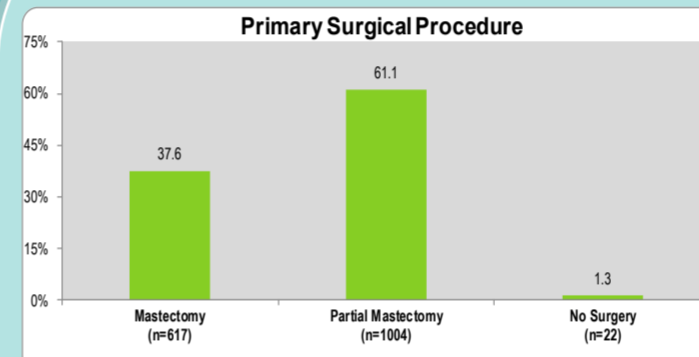
### Overall Tumour Type



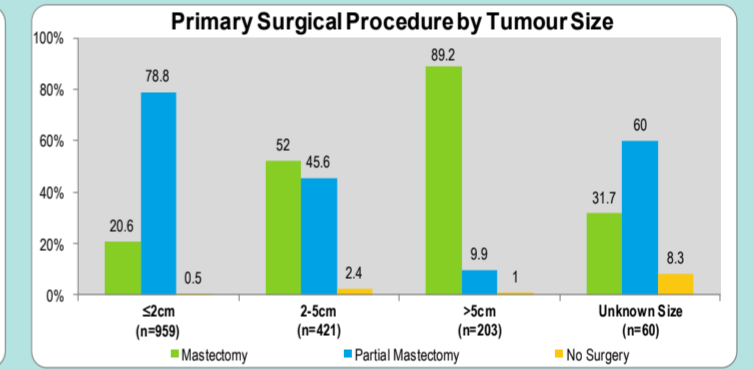
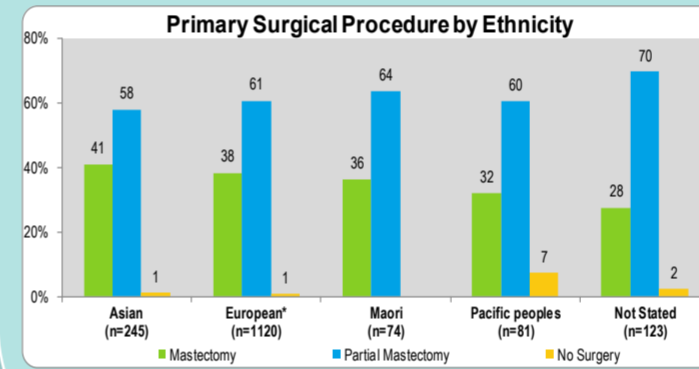
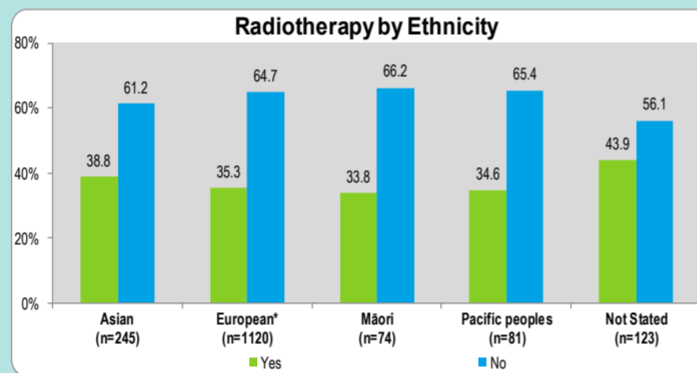
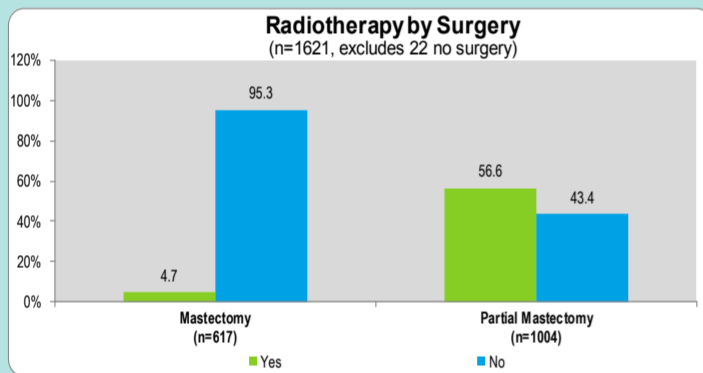
### Diagnosis (by incident, n=1643)



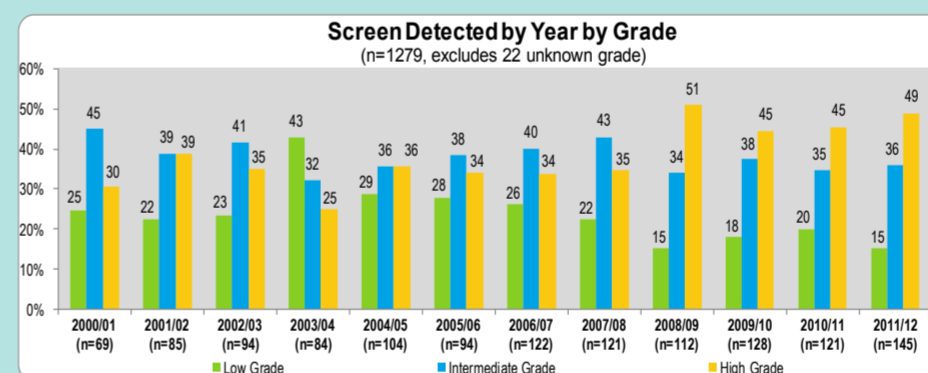
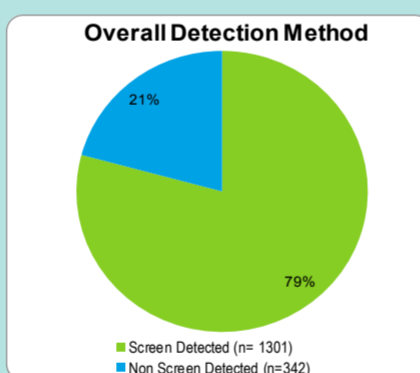
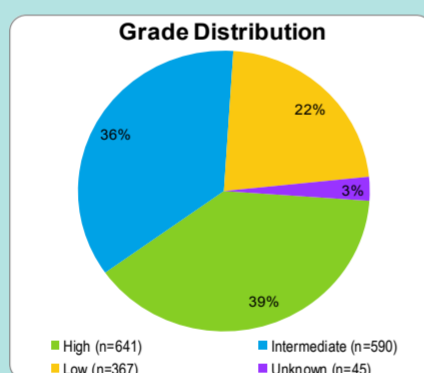
### Treatment/Surgery (by incident, n=1643)



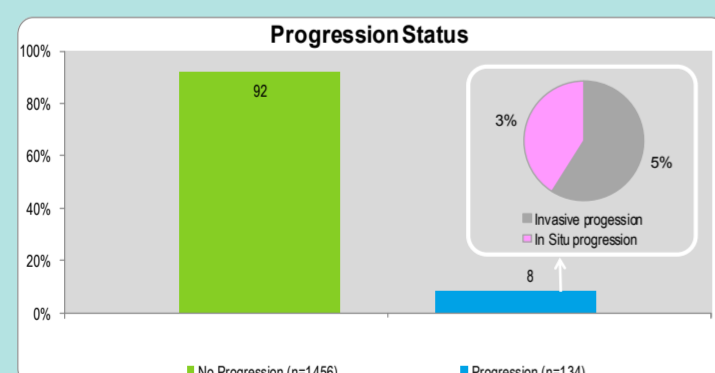
### Treatment/Oncology (by incident, n=1643)



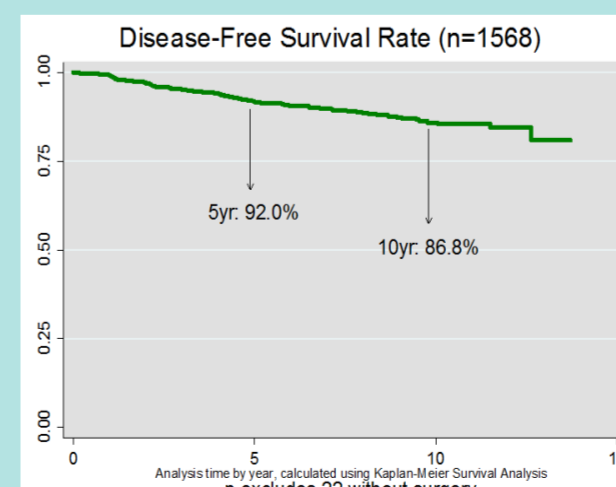
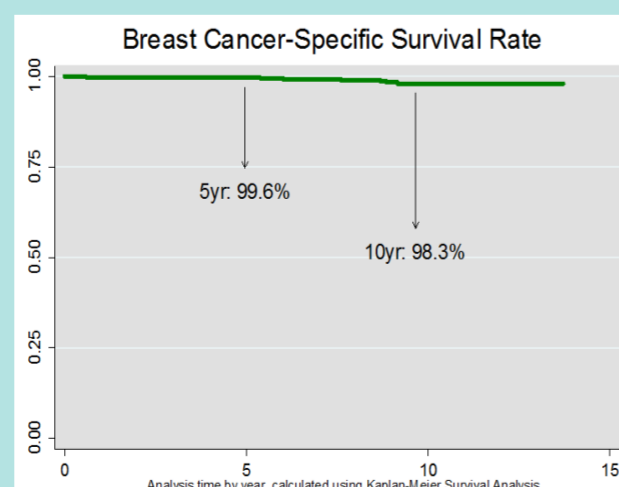
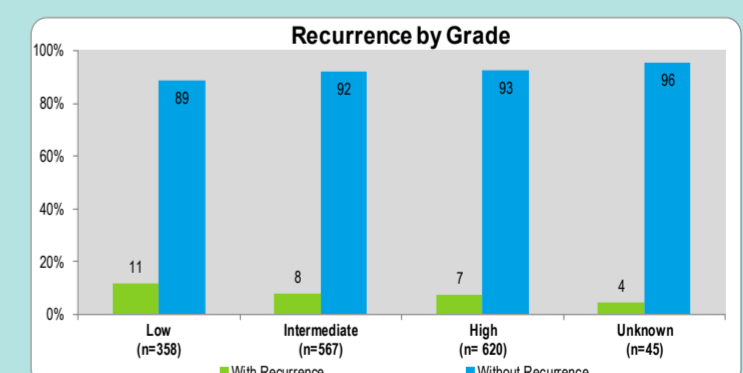
### Prognostic Indicators (by incident, n=1643)



### Survival Data (by patient, n=1590)



Recurrence Types including Combinations (alive only) - In Situ			
Status of Disease (per patient)	Overall*, n=1465	5 Year, n=880	10 Year, n=238
Loco-Regional Recurrence Alone	61 (4.2%)	35 (4.0%)	13 (5.5%)
Metastases Alone	2 (0.1%)	4 (0.5%)	0 (0%)
2nd Primary Alone	47 (3.2%)	36 (4.1%)	18 (7.6%)
Loco-Regional Recurrence & Metastases	4 (0.3%)	1 (0.1%)	0 (0%)
Loco-Regional Recurrence & 2nd Primary	6 (0.4%)	4 (0.5%)	3 (1.3%)
Metastases & 2nd Primary	0 (0%)	2 (0.2%)	0 (0%)
All 3	1 (0.1%)	0 (0%)	0 (0%)
<b>Total Progression</b>	<b>121 (8.3%)</b>	<b>82 (9.3%)</b>	<b>34 (14.3%)</b>



'Breast Cancer-Specific Survival Rate' includes breast cancer and unknown causes of death as events and the rest are non-events.

'Disease-Free Survival Rate' includes all disease progression and breast cancer and unknown causes of death without prior history of progression as events and the rest are non-events.

Data to date for demographics, diagnosis, treatment, prognostic indicators and survival are mostly consistent with national and international reports.

The Auckland Breast Cancer Register, Building 4, Level 6, Room 64-166, Greenlane Clinical Centre, Private Bag 92189, Auckland.  
Email: mbarrios@adhb.govt.nz, Phone: (09) 630 9943 ext. 26730, Fax: (09) 631 0730

The Auckland Breast Cancer Study Group gratefully acknowledges:  
the funding of the Register by The New Zealand Breast Cancer Foundation  
the administrative support of Auckland District Health Board  
and the valuable contribution of Valerie Pennick to this poster.

